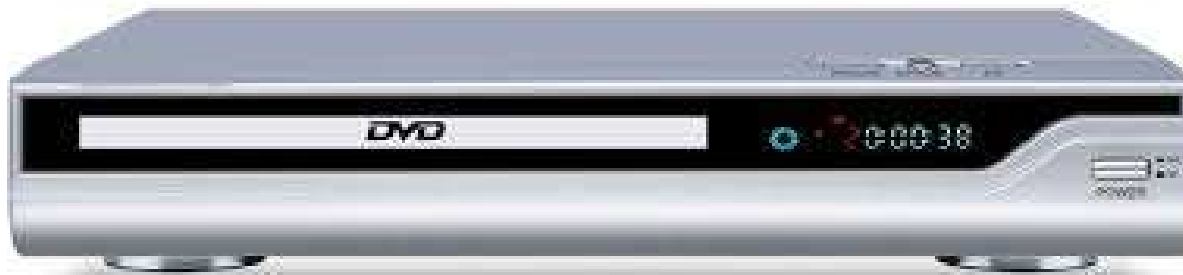


# Steel Case Electronic



**Home Electronics: DVD, VCR, Stereo, Security Boxes, etc.**

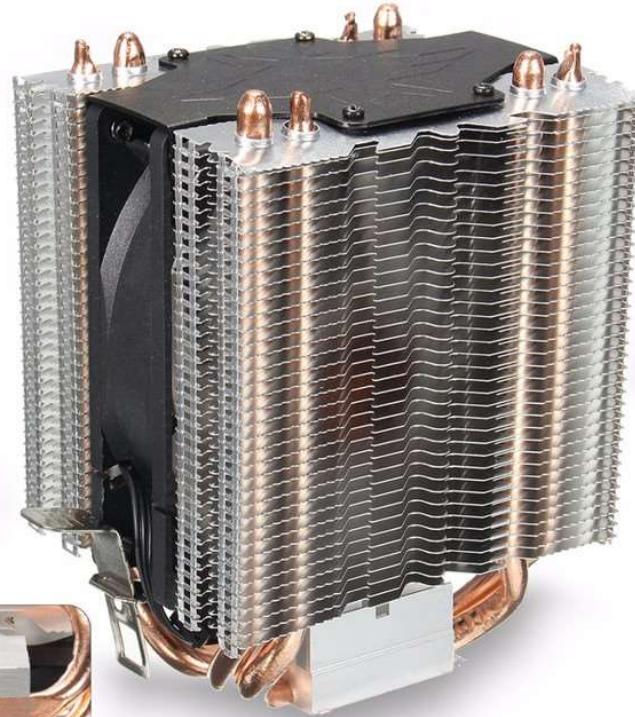
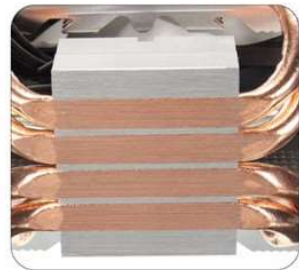
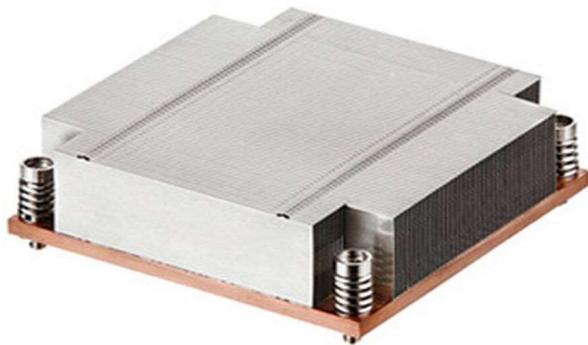
# Heat Sink Aluminum



Must be pure Aluminum.  
Magnet will not stick to this item.  
Generally lightweight.

# Heat Sink Al/Cu

Must have copper.  
Copper tubing cannot  
be cut/must be whole.



# Docking Stations

Check for mouse and keyboard ports.

Check for video/audio ports.

If stand is attached it must be separated.

Check for ethernet(internet) connection ports.





# Docking Stands



Generally double level platforms.  
Typically heavy plastic, Steel, &  
aluminum.

# Aluminum Breakage

**No Heat Sink!**

# Ink Cartridges

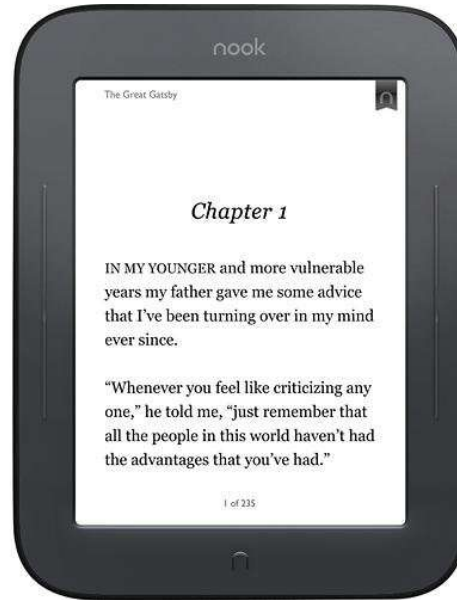


Comes from ink jet Printer.

# Fans



# Misc LCD Devices



Single Use Tablets  
GPS systems w/screen  
NOOK, Kindle, E-Reader



# Breakers



Separate  
from Large  
and Small

Handyman

# Doc Cams



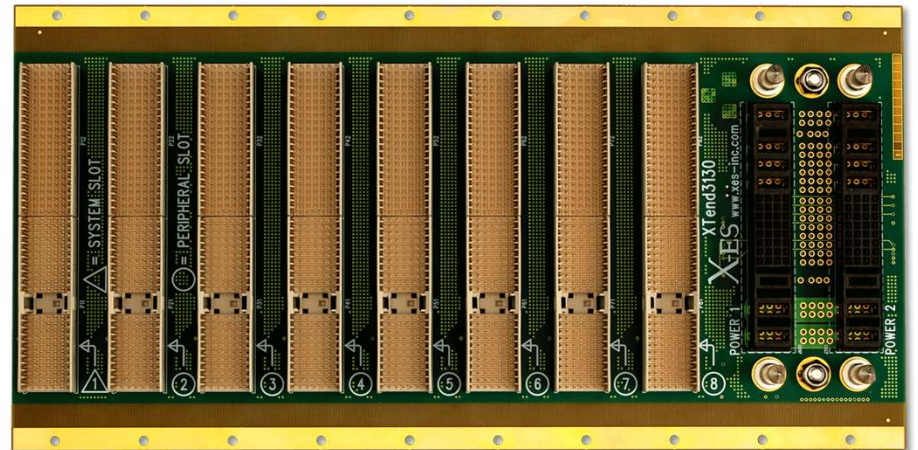
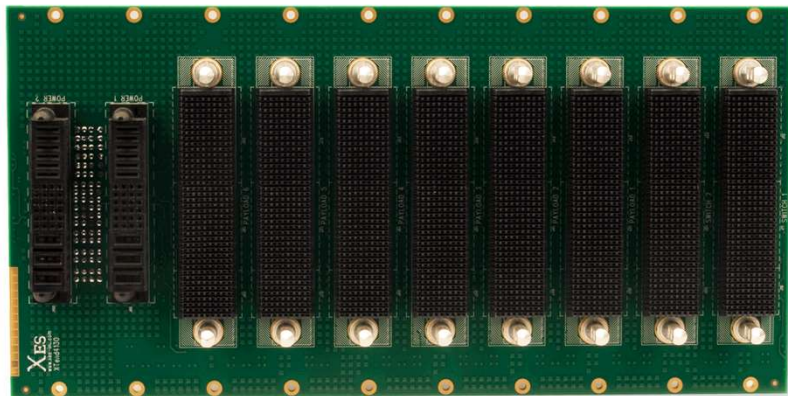
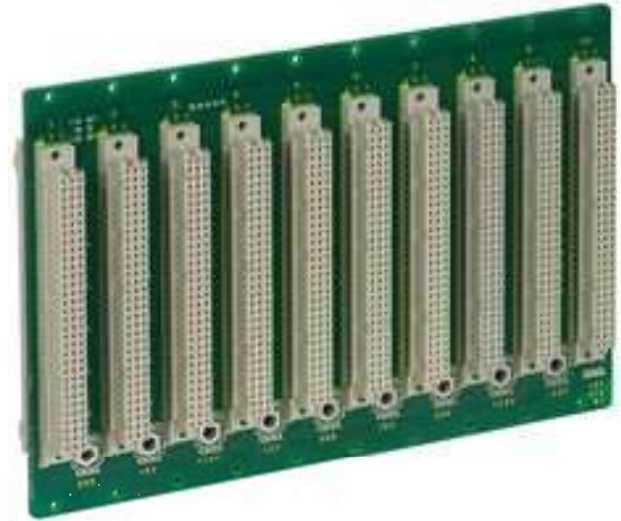
# LCD Stands

Separate between Steel and Aluminum.



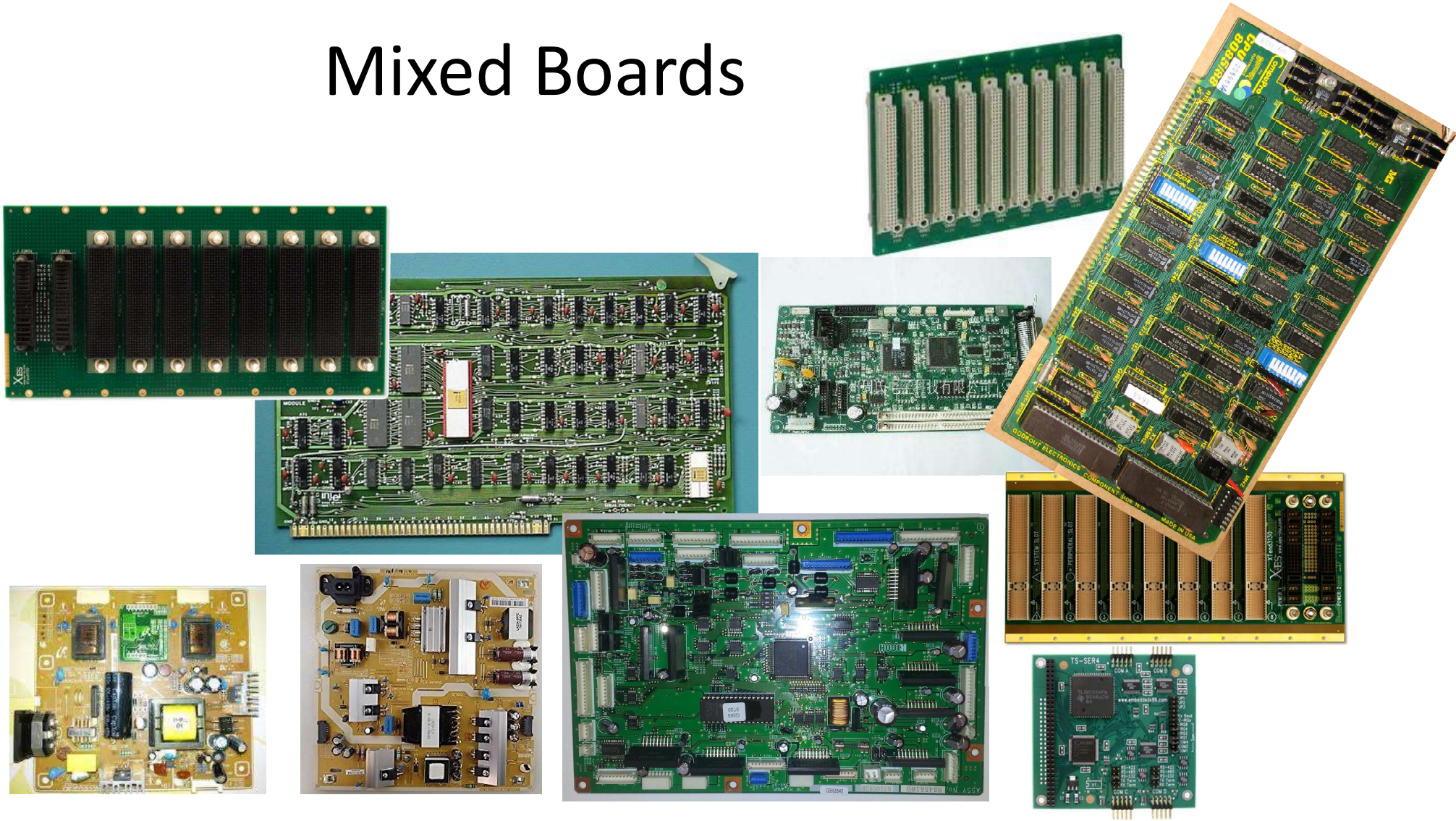
# Back Planes

Generally very thick and heavy.  
Have gold fingers or multiple connectors.





# Mixed Boards





# Laptops

Must be complete unit cannot be missing screen or keyboard.

Can be with or without battery.



# Laptops

Missing one or more components:  
Battery, CPU, HDD, and RAM



# Projectors



# LCD Monitors

Sort by sizes and test  
with flash light.



# LCD Panels



Any LCD without casing or wires.  
Test with flash light. Sort by Size.



# Printer Scrap

Remove Paper, Ink, and Toner.

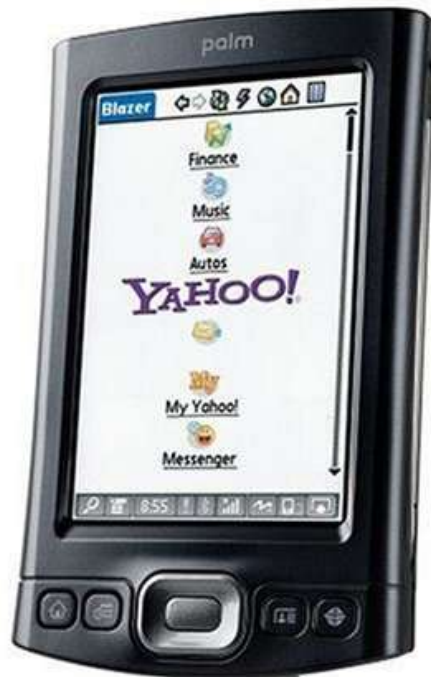


# Toner Cartridges

Comes out of Laser Printer



# Palm Planners



# Mobile Phone

Separates from with and without battery



# Game Consoles



# Steel Network



Identified by multiple RJ45 jacks





# Cable Box W/O HDD



# Cable Box

Separate between  
with and without  
Hard Drive



# Mixed Motors



Separate between Large and small.



To Be Shredded

# Modem/Router Plastic



# Modem/Router FE Case





# Office Phone



Do not mix with house phone or conference phones.



# UPS Plastic

Separate between with and Without Batteries.



Usually APC brand.



# UPS Plastic W/O Battery



# UPS With Battery



# UPS Steel Case

Separate between with and without battery



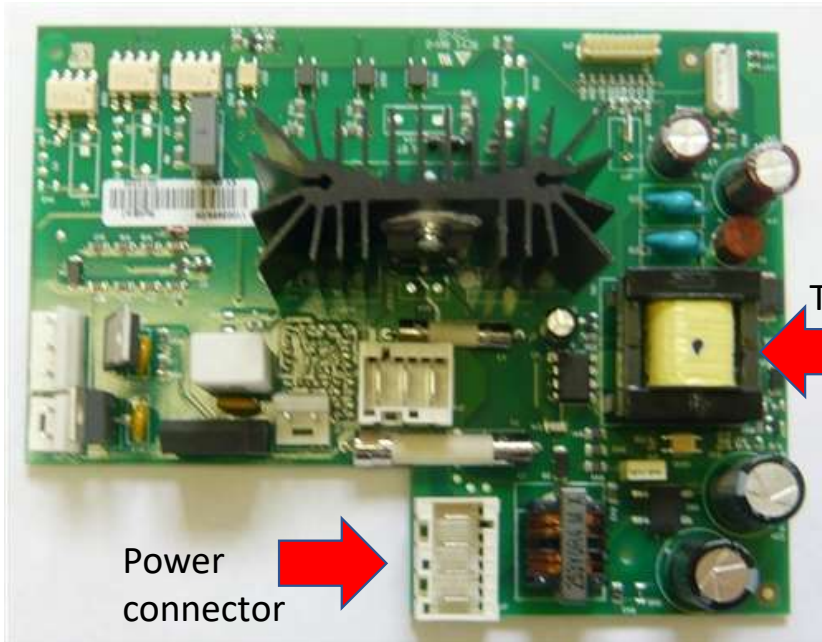
Usually APC brand.



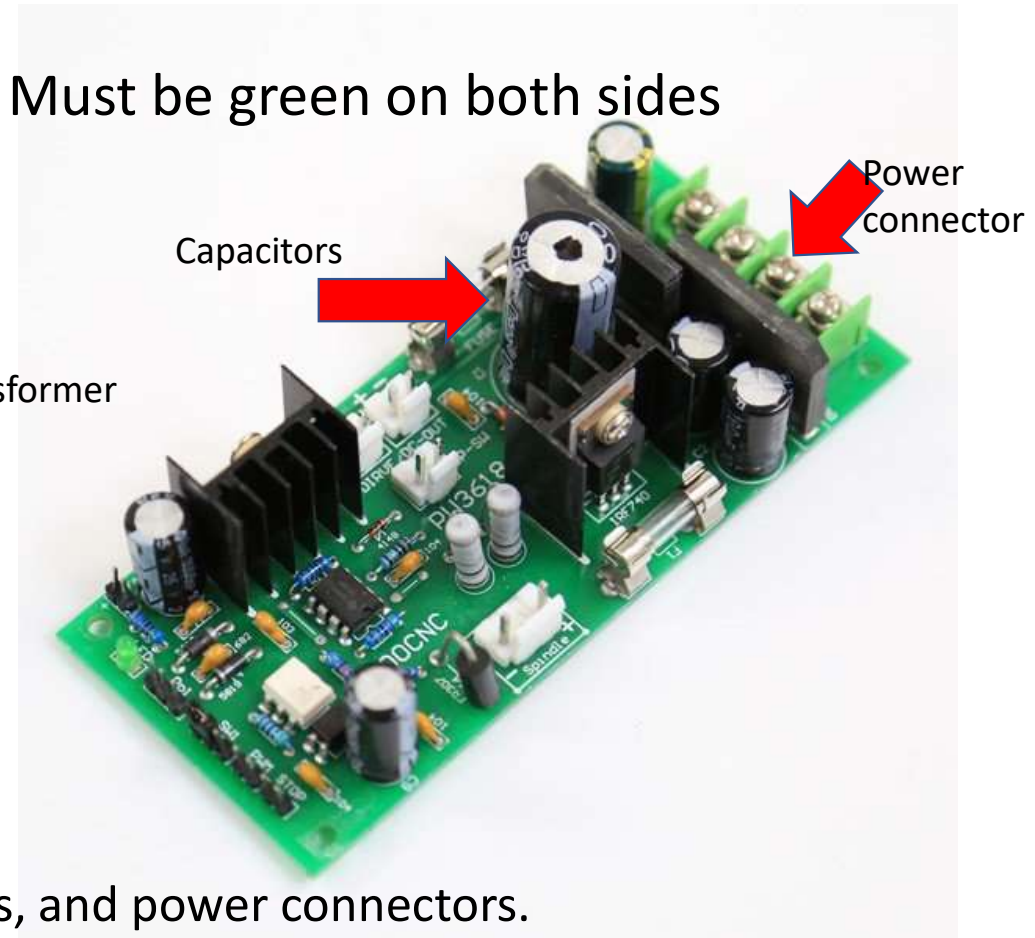
# UPS Steel W/O Battery



# Power Board Green



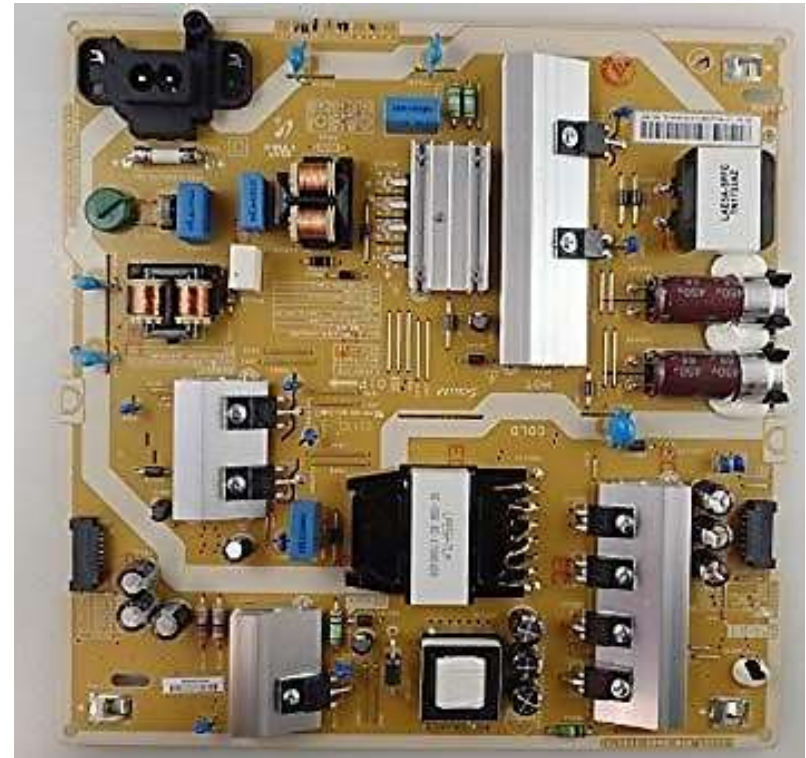
Must be green on both sides



Power boards have transformers, capacitors, and power connectors.



# Power Board Brown

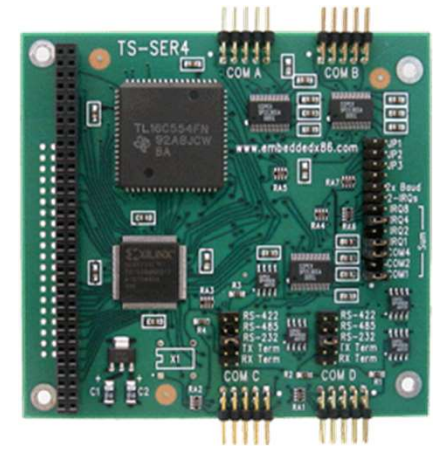
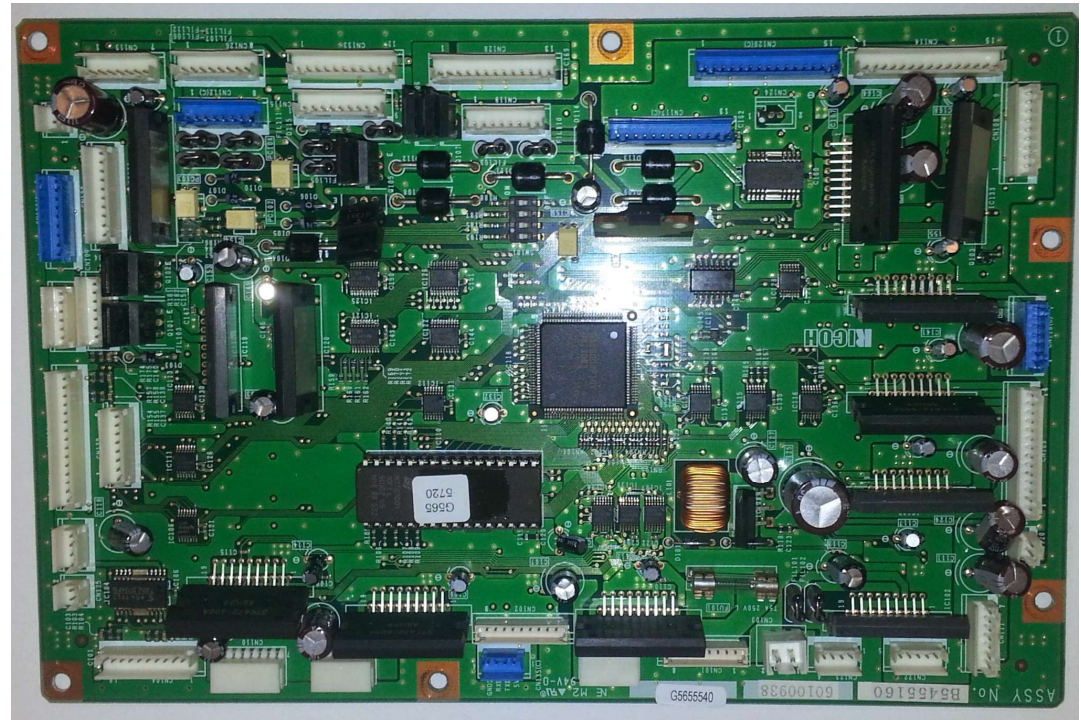




# Mid Grade Board



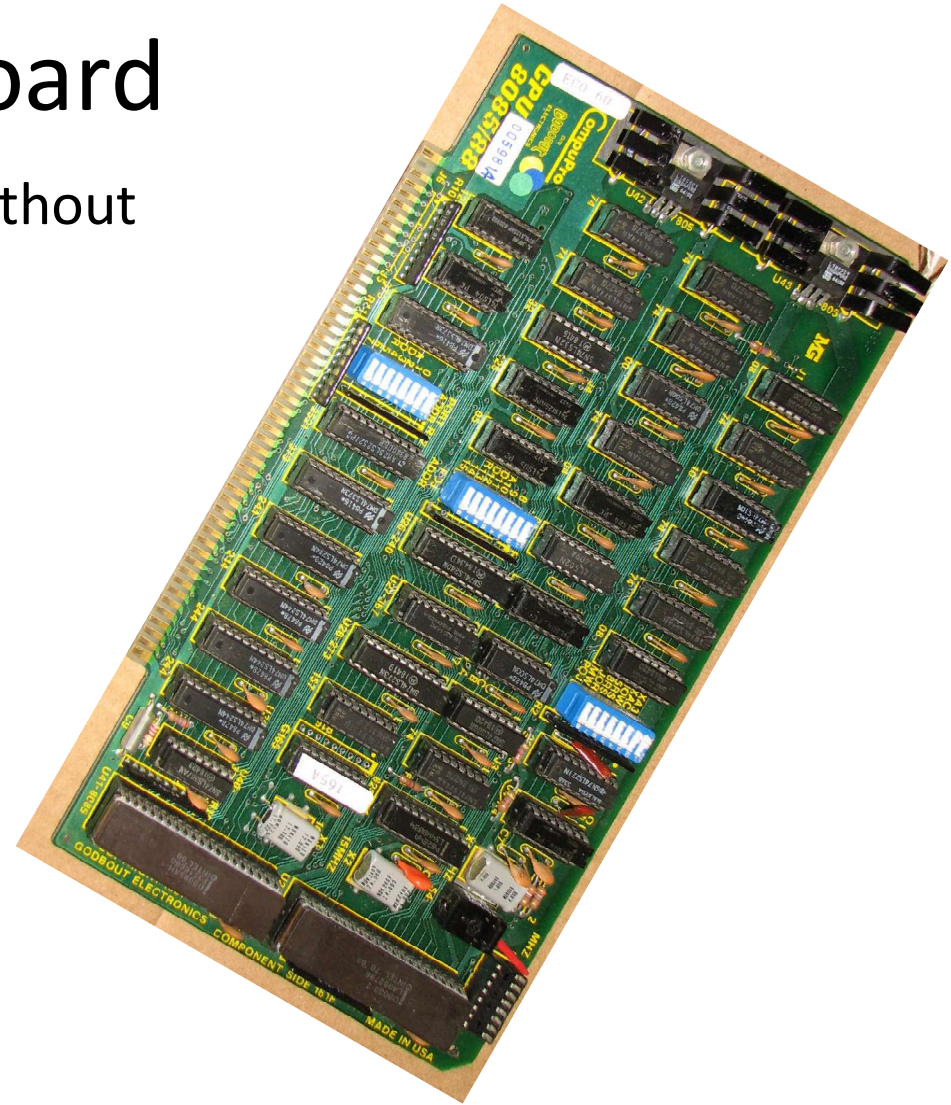
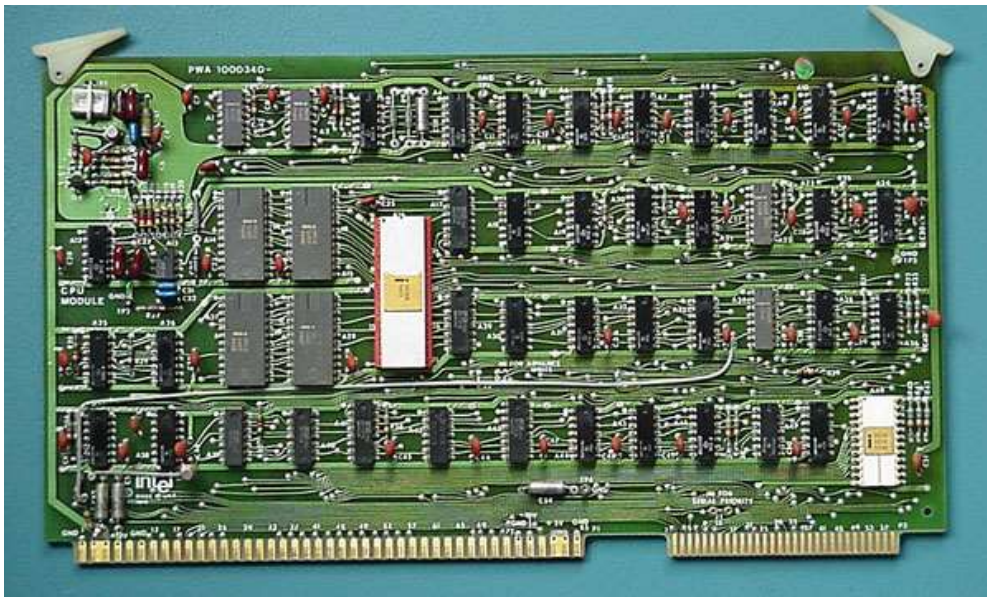
Partial populated with IC chips





# H/G Grade Board

Heavy populated with IC chips with or without gold trims and fingers.



# Surge Protector W/Wire



# Power Strip W/Wire

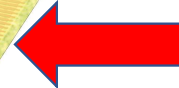
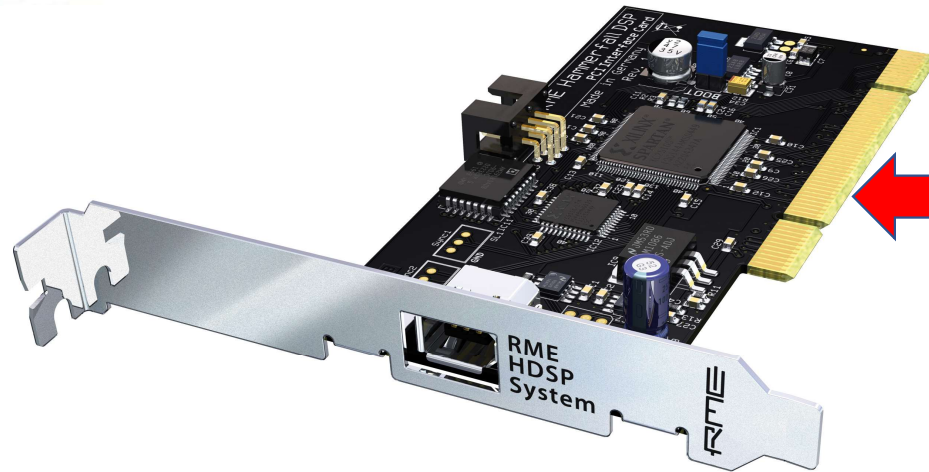


# Misc Terminals





# Finger Cards



Gold fingers

# Christmas Lights

Large ornaments needs to be removed.

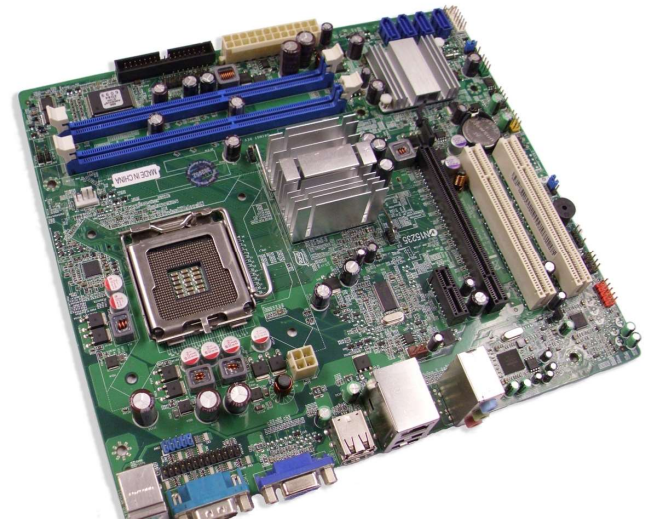


100  
LIGHT  
34'





# P4 Mother Boards



- P4 – GREEN (MUST BE GREEN ON BOTH SIDE)
- P4- COLOR (ANY COLOR THAT ARE NOT GREEN)
- P4 – USABLE (L SHAPE SOCKETS)

# Power Supply W/Wire



Comes from Computer Towers

# Power Supply W/O Wire



Will come without wires or wires were cut.

# Server Power Supply



↑ Gold connectors



↑ Gold connectors



# Industrial Power Supply



They are very large power supplies



# Laptop Media Drive



Usually comes from laptop.  
Keep separate if large quantity.

# Media Drive



CD/DVD – Drive  
Floppy Drive  
Tape Drive

# Keyboard/Mouse W/Wire



**Do not mix speakers** with keyboard and mouse.

# Speakers



**Do not mix speakers** with keyboard and mouse.

# Hard Drive W/O Board





# Hard Drive



# Hard Drive Full Board



# Hard Drive W/Caddy





# Credit Card Readers



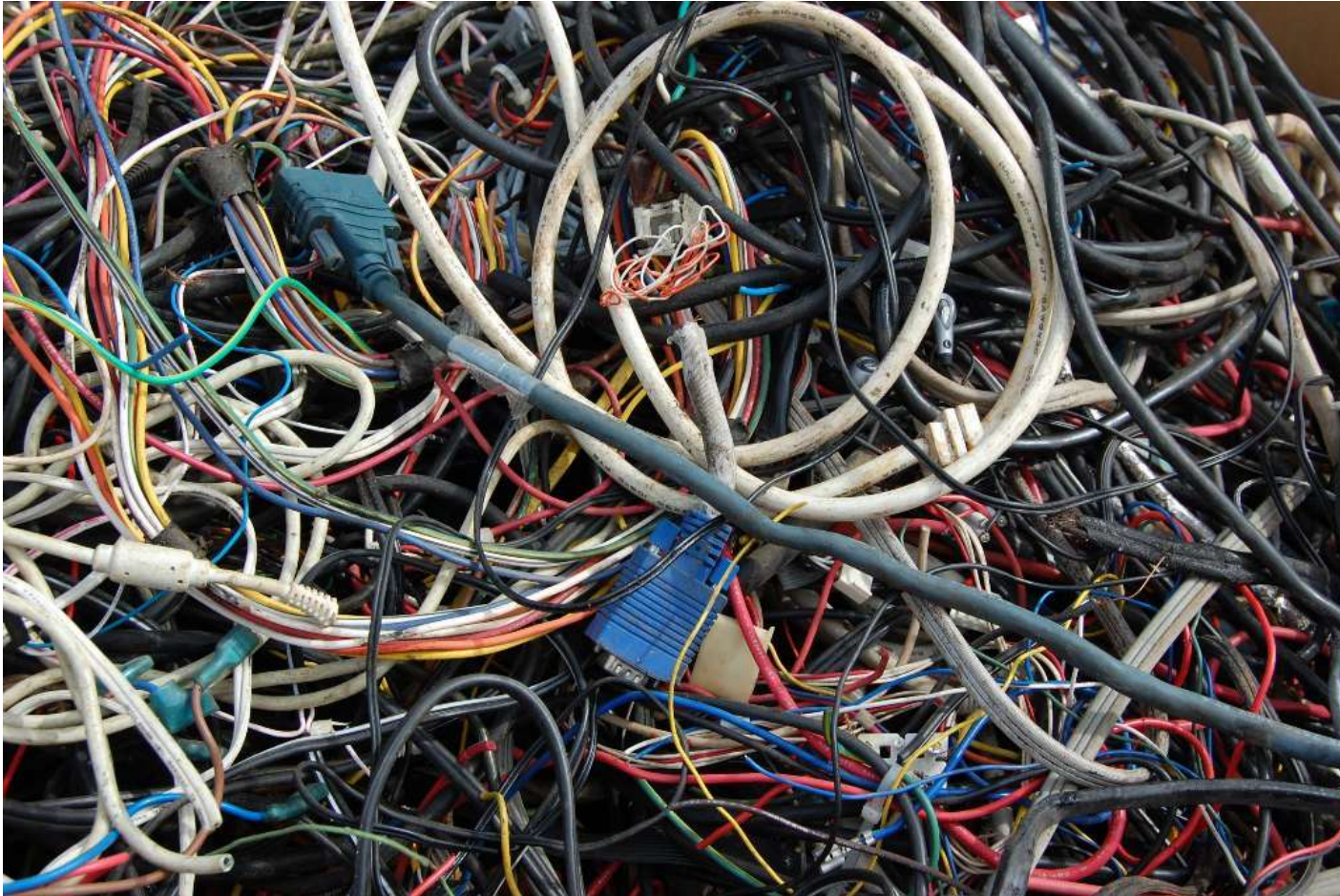
Separate with and without Screens

# A/C Adapter W/Wire





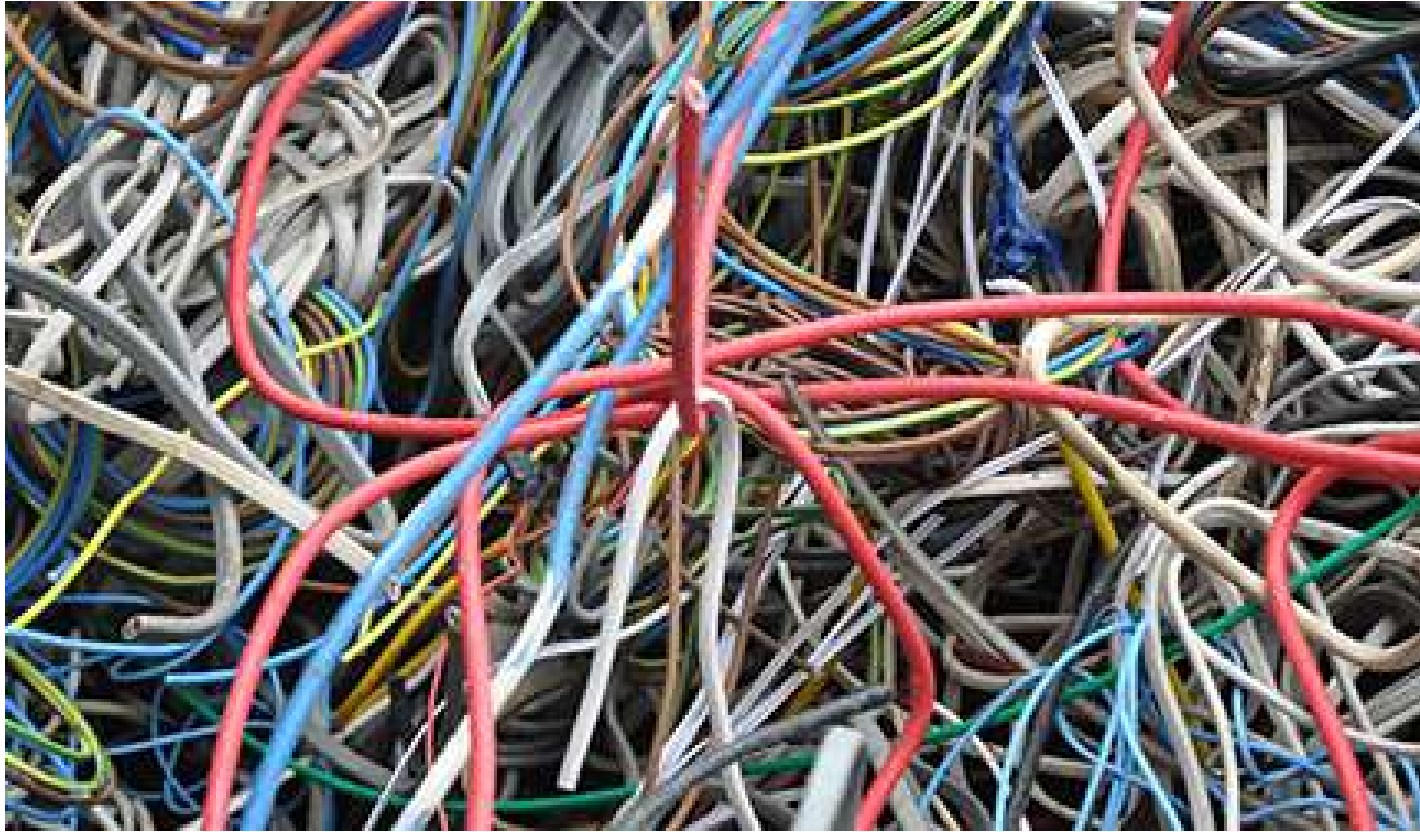
# 30-35% Mixed Wire



MUST COME OUT:  
STEEL COAX  
FIBER OPTICS  
RBG WIRES/VCR WIRE  
TELEPHONE WIRE

CAT5/CAT6 IF EASY OR IN  
LARGE BUNDLE

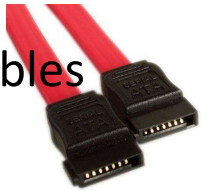
# HG Mixed Wire



40-45% Wire – Cat 5/Cat 6  
(Internet Wires)

**Not phone wire!**

40-45% Wire:  
Ribbon – Flat cables  
Sata Wire



45% or Higher  
Single insulated Wires

Do not mix Cat 5/Cat 6, Ribbon, or Single insulated Wires. They must be in their own Category.

# Large Consumer Electronics



Dismantle

Steel



Trash

Plastic

# A/C Adapter W/O Wire



Comes without wires or wires were cut.

# Low Grade Scanners



# High Grade Scanners

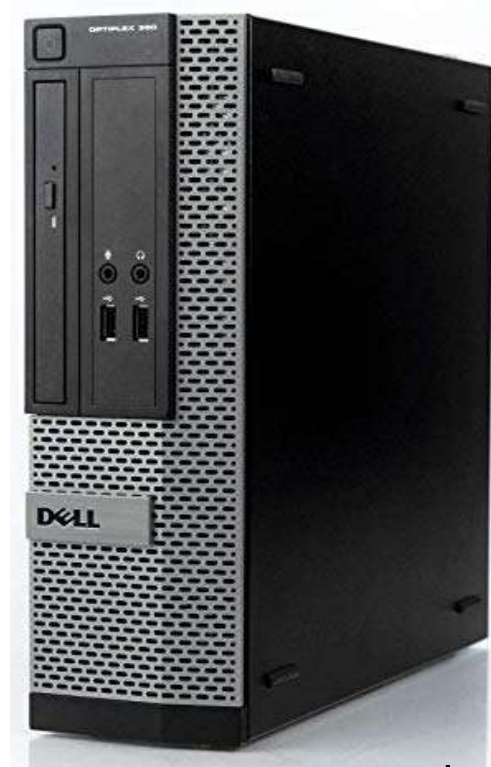
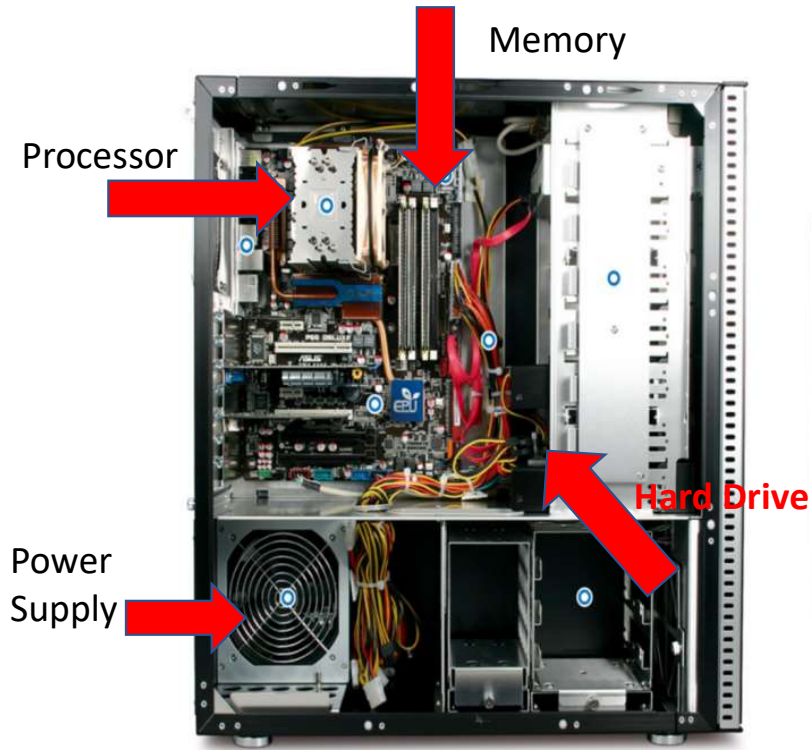




# Cameras



# Computer/PC



Computer complete – Must have all the components e.g. processor, memory, hard drive, power supply, and Mother board.

Computer incomplete – Missing at least one component.

# Blade Server

Can be mixed in with regular Server if not large quantity.

Less than 2 inches



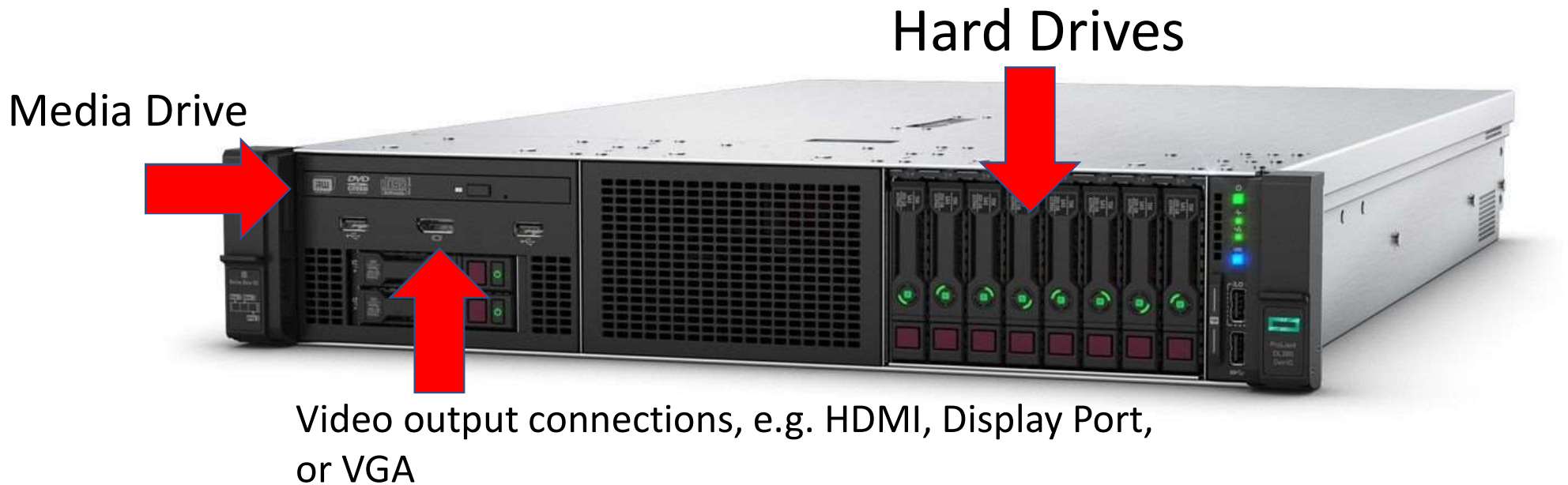
Server complete

– Must have all the components e.g. processor, memory, hard drive, power supply, and Mother board.

Server incomplete

– Missing at least one component.

# Server



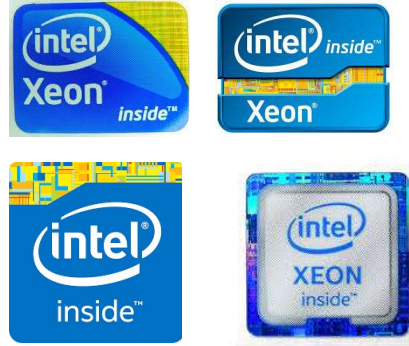
- Server complete – Must have all the components e.g. processor, memory, hard drive, power supply, and Mother board.
- Server incomplete – Missing at least one component.

# Server Tower



Can be mixed in with regular Server if not large quantity.

Will have Xeon Label.



Server complete

– Must have all the components e.g. processor, memory, hard drive, power supply, and Mother board.

Server incomplete

– Missing at least one component.



# Drive Array/Stripped Server



Will have back plane.



Does not have:  
**Media Drive**  
**Video Output Connection**

Category – with Hard drives or Empty